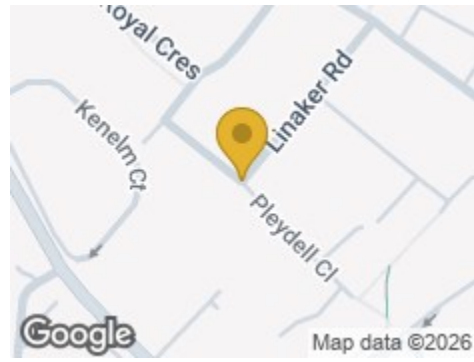


Road Map



Hybrid Map



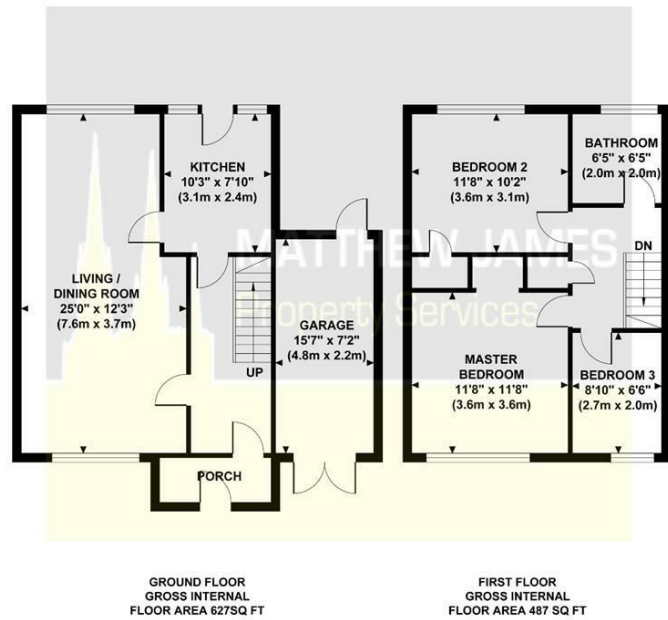
Terrain Map



**MATTHEW JAMES**  
Property Services

Floor Plan

**10 PLEYDELL CLOSE**  
Approximate Gross Internal Area 1114 sq ft / 103.49 sq m



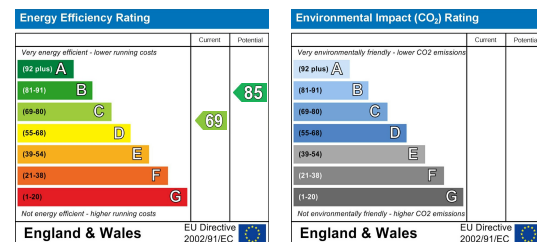
Although every attempt has been made to ensure accuracy, all measurements are approximate and no responsibility is taken for any error, omission, or mid-statement. This floor plan is for illustrative purposes only and not to scale. Measured in accordance to RICS standards.

Viewing

Please contact us on 02477 170170 if you wish to arrange a viewing appointment for this property or require further information.

These particulars, whilst believed to be accurate are set out as a general outline only for guidance and do not constitute any part of an offer or contract. Intending purchasers should not rely on them as statements of representation of fact, but must satisfy themselves by inspection or otherwise as to their accuracy. No person in this firm's employment has the authority to make or give any representation or warranty in respect of the property.

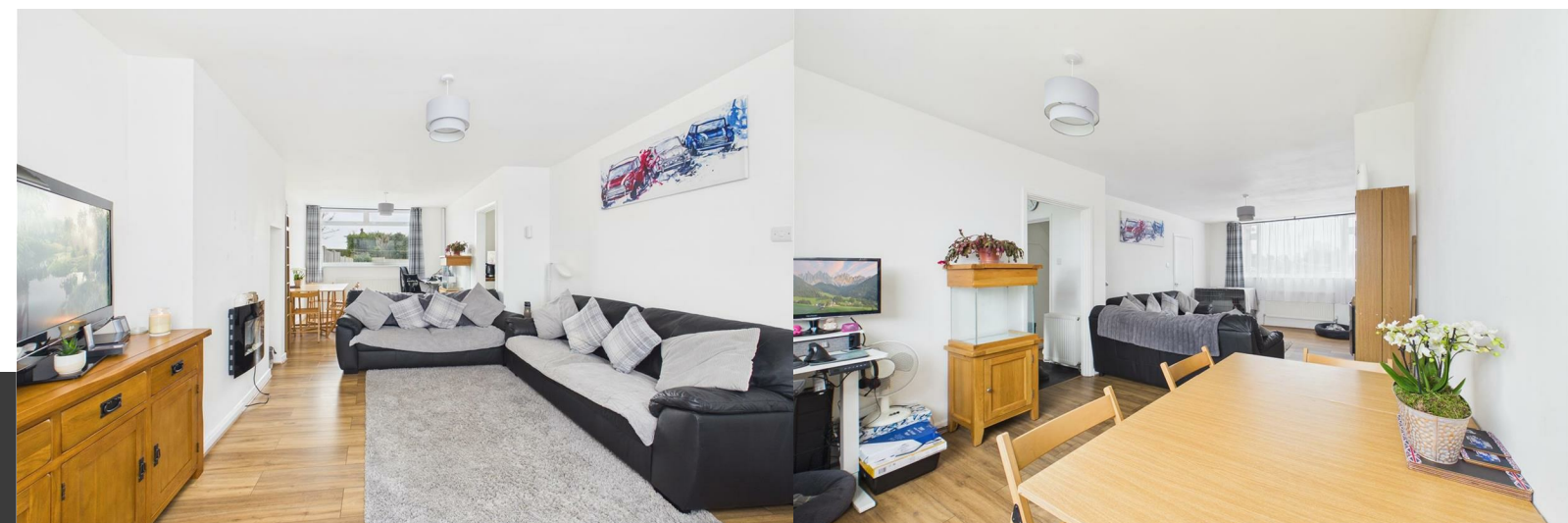
Energy Efficiency Graph



**10 Pleydell Close**

Willenhall, Coventry CV3 3EE

Offers Over £260,000



CONTACT INFORMATION

24a Warwick Row, Coventry CV1 1EY  
02477 170170

info@matthewjames.uk.com  
www.matthewjames.uk.com

Facebook  
Twitter

# 10 Pleydell Close

Willenhall, Coventry CV3 3EE

Offers Over £260,000



Front/ Driveway

Porch

Entrance Hall

Living Room/ Dining Room

25'0 x 12'3

Kitchen

10'3 x 7'10

Upstairs Landing

Master Bedroom

11'8 x 11'8

Bedroom Two

10'2 x 11'8

Bedroom Three

8'10 x 6'6

Family Bathroom

6'5 x 6'5

Rear Garden

Garage

15'7 x 7'2

